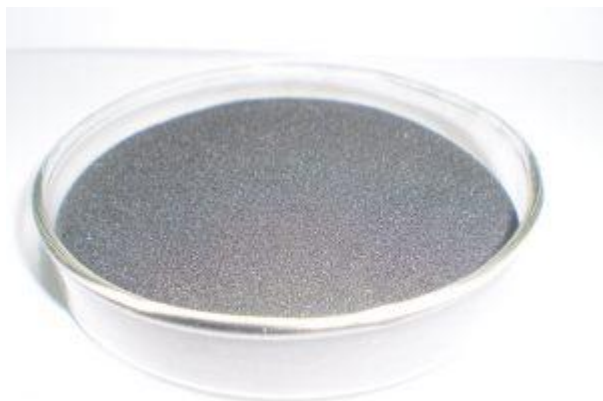


# Copper Lignohumate Description

Copper lignohumate is in black powder form, soluble in water. Mainly used in agriculture for spray or irrigation, supply plants copper in chelated form, which is easily absorbed by plants.



## Main Specification

Name	Copper lignohumate
Product Code	GAC-CuLS
Appearance	Yellow Brown powder
pH	4-7
Dry matters	95%min
Water-insoluble	1.0%max
Sulfate	2%min
Total Copper	3%around
lignohumate	55%min
Density	0.532g/cm <sup>3</sup>
Moisture	7%Max

## Main Function

- Chelated Copper activates some enzymes in plants which are involved in lignin synthesis
- [Copper lignohumate](#) is essential in several enzyme systems.
- Copper also required in the process of photosynthesis,
- Chelated Copper is essential in plant respiration and assists in plant metabolism of carbohydrates and proteins.

- Copper also serves to intensify flavor and color in vegetables and color in flowers.

## **Package**

- 25kgs woven bags with liner inside
- According to customer requirement